

Case History – 22 : Using Online Acoustic Sensor Method

Equipment Under measurement : **22kV GIS AREVA Switchgear**

Date of Measurement : **14th November 2016**

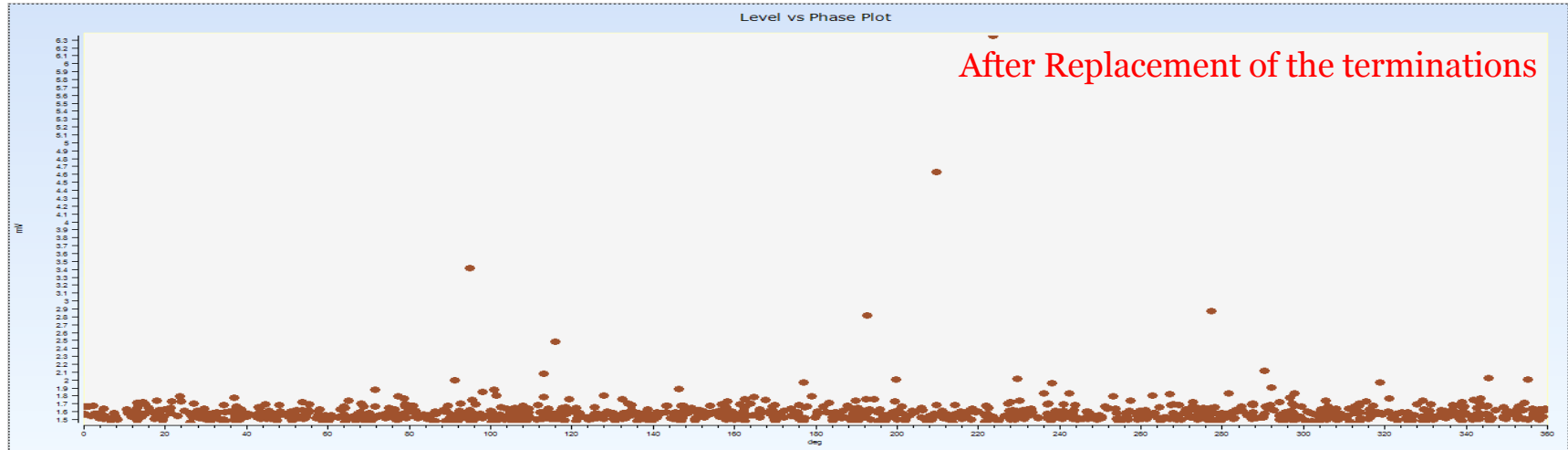
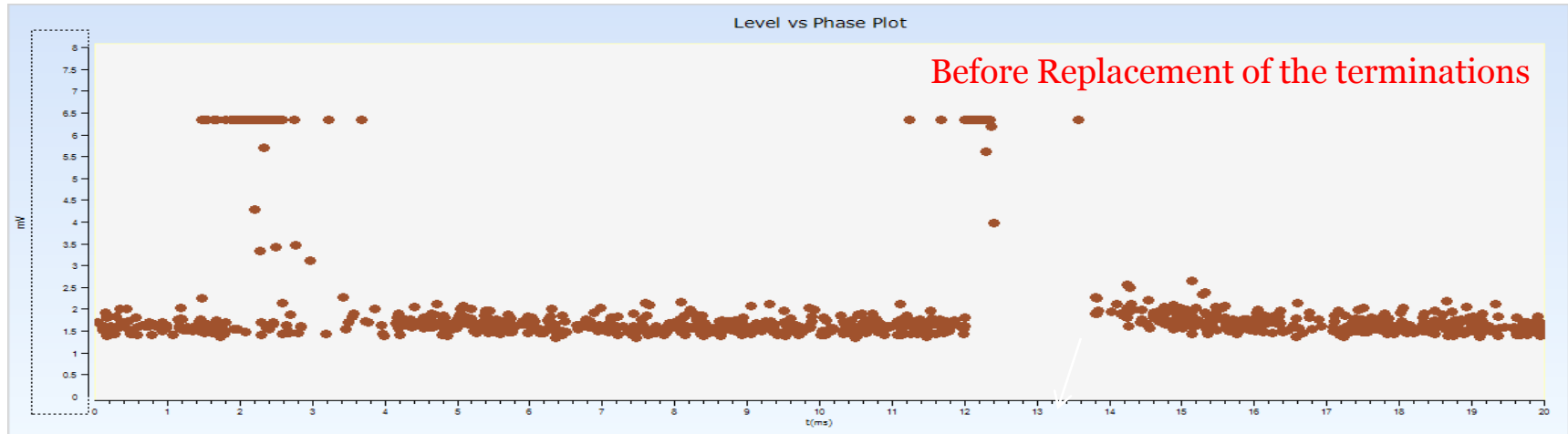
Sensor Used: **Acousitc sensor**

Observation: **Discharge at the Cable Termination of the Blue Phase.**



22kV GIS AREVA SWITCHGEAR, HT 251 (PHASE L3)

- Phase Resolved PD Plot



22kV GIS AREVA SWITCHGEAR, HT 251 (PHASE L3)

- Time Domain Plot



Case History – 22 : Using Online Capacitive UHF Sensor Method

Equipment Under measurement : **22kV GIS AREVA Switchgear**

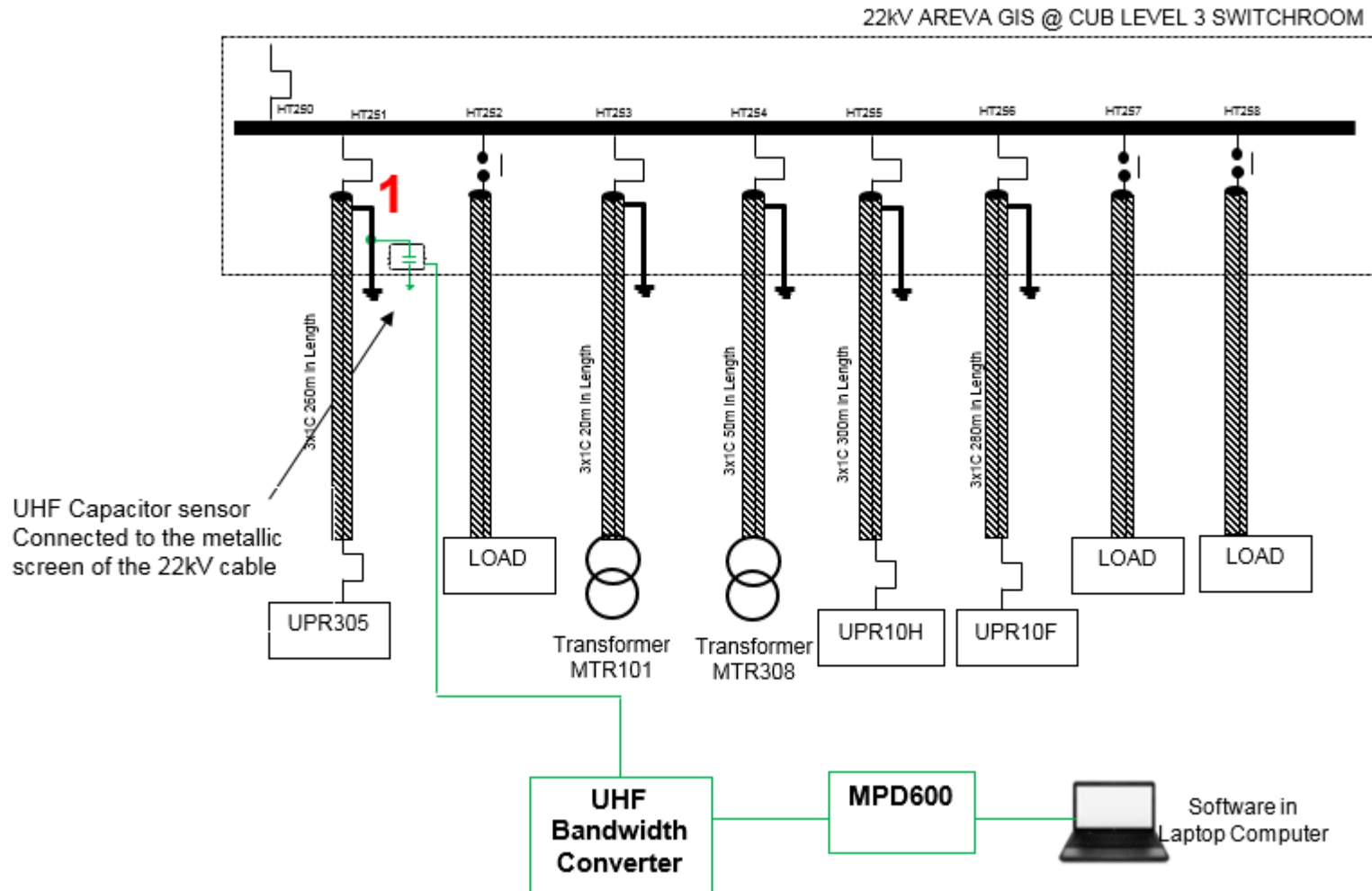
Date of Measurement : **02nd November 2016**

Sensor Used: **Capacitive UHF Sensor**

Observation: **Discharge at the Cable Termination of the Blue Phase.**



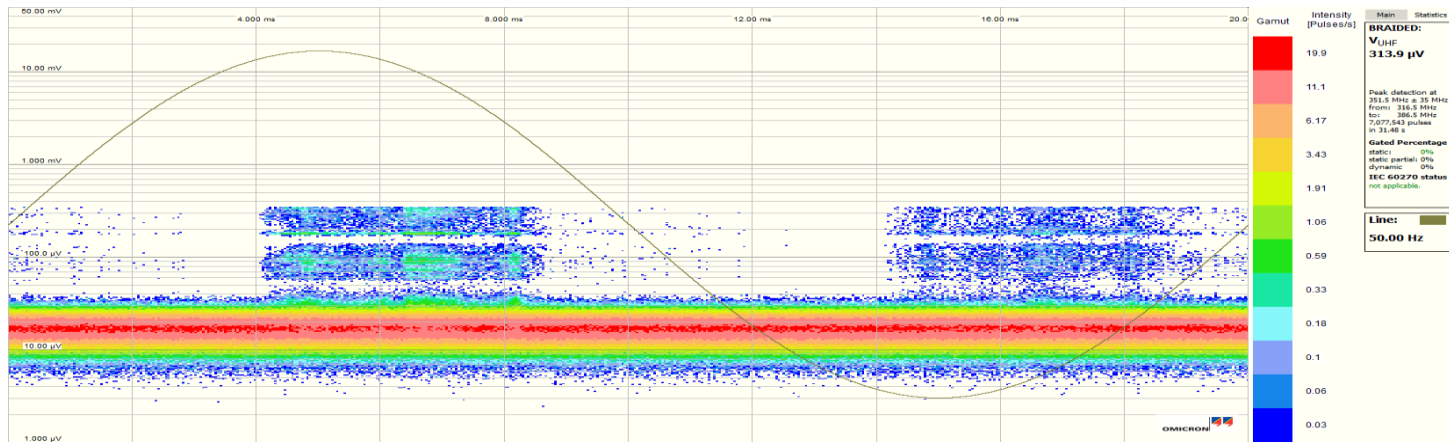
Connection Diagram



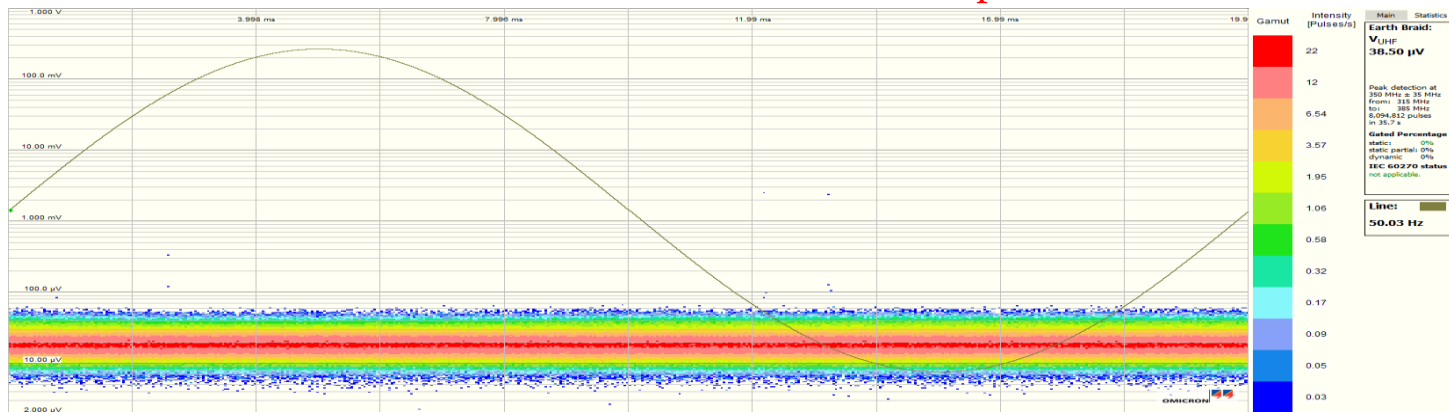
22kV GIS AREVA SWITCHGEAR, HT 251 (PHASE L3)

- Phase Resolved PD Plot

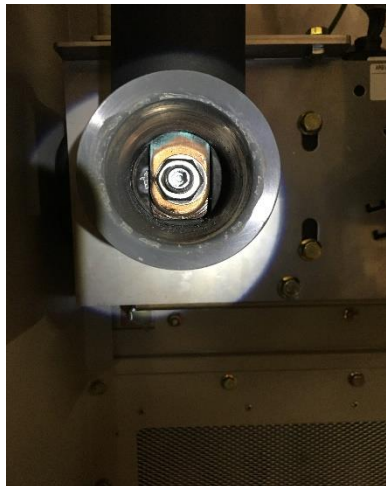
Before Replacement of the terminations



After Replacement of the terminations



Burnt Marks found on the 22kV Cable Termination of phase L3





After the replacement is being done