

Case History – 12 : Using Online Snapshot Ultrasonic Method

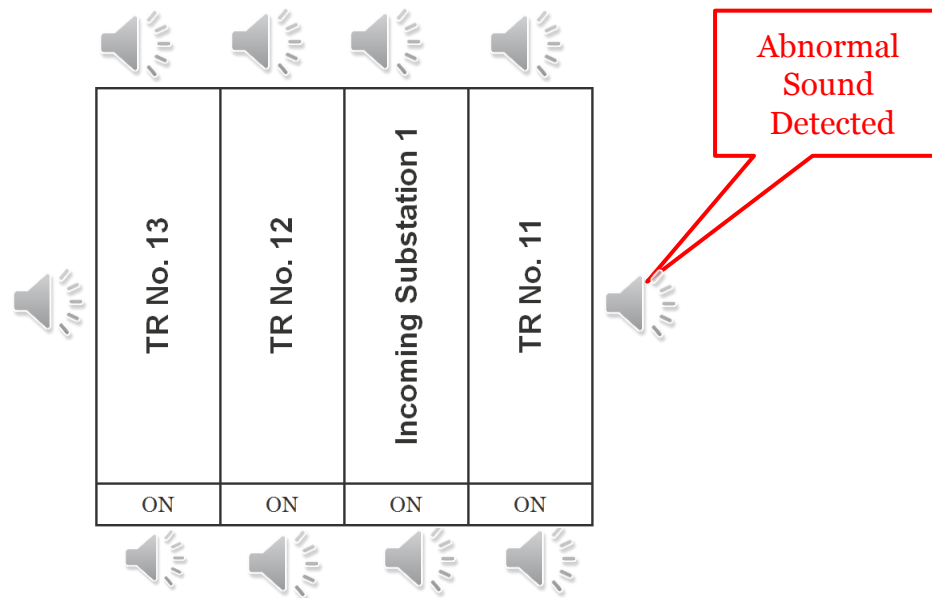
Equipment Under measurement : **22kV AIS Hitachi Switchgear**

Date of Measurement : **28th August 2014**

Type of Partial Discharge Measurement: **Snapshot Mode Ultrasonic Measurement**

Measurement Equipment : **Ultra TEV Locator (Airborne Ultrasonic sensor)**

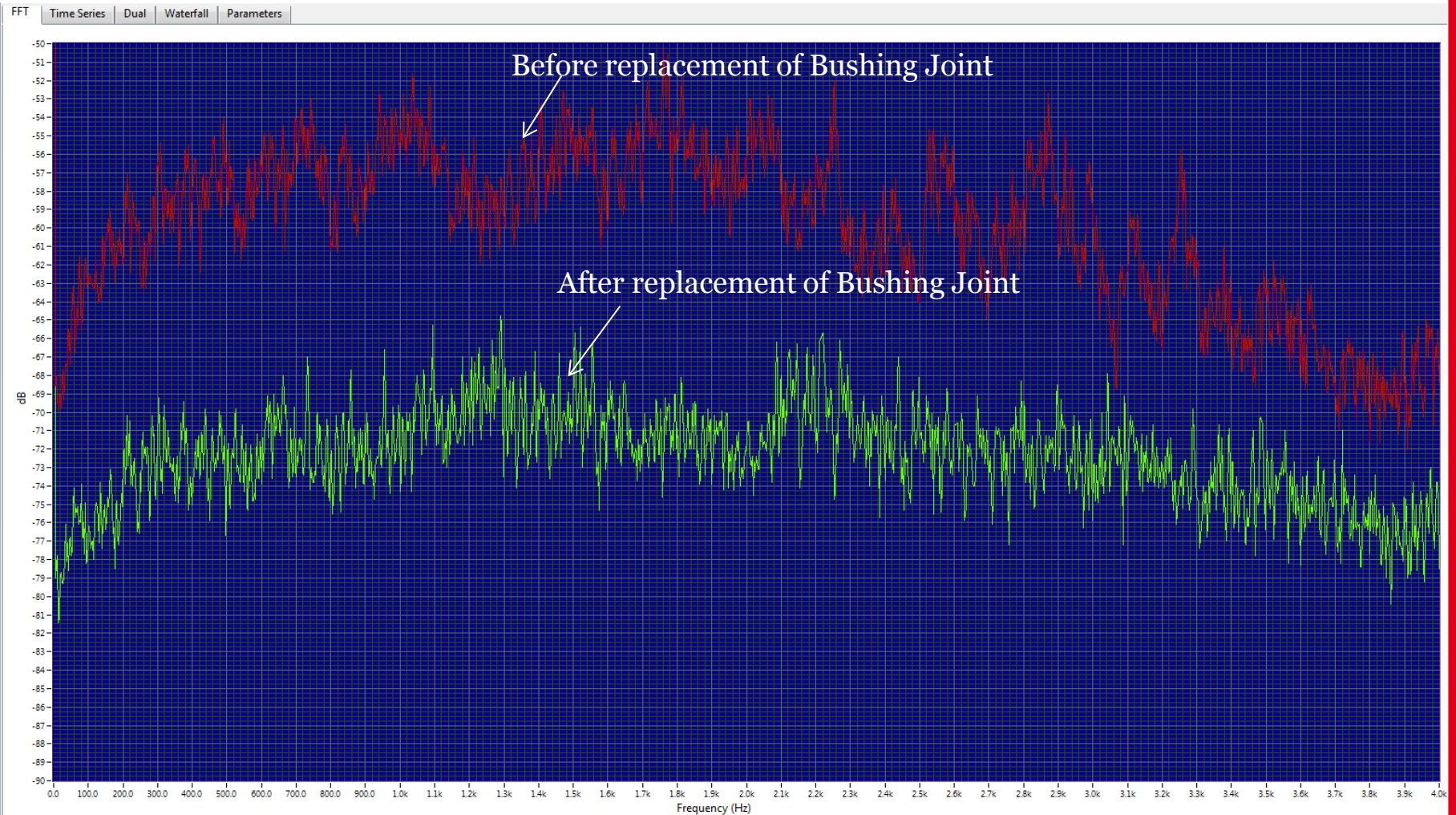
Observation : **Surface PD was detected at the bushing joint.**



ABNORMAL ULTRASOUND DETECTION

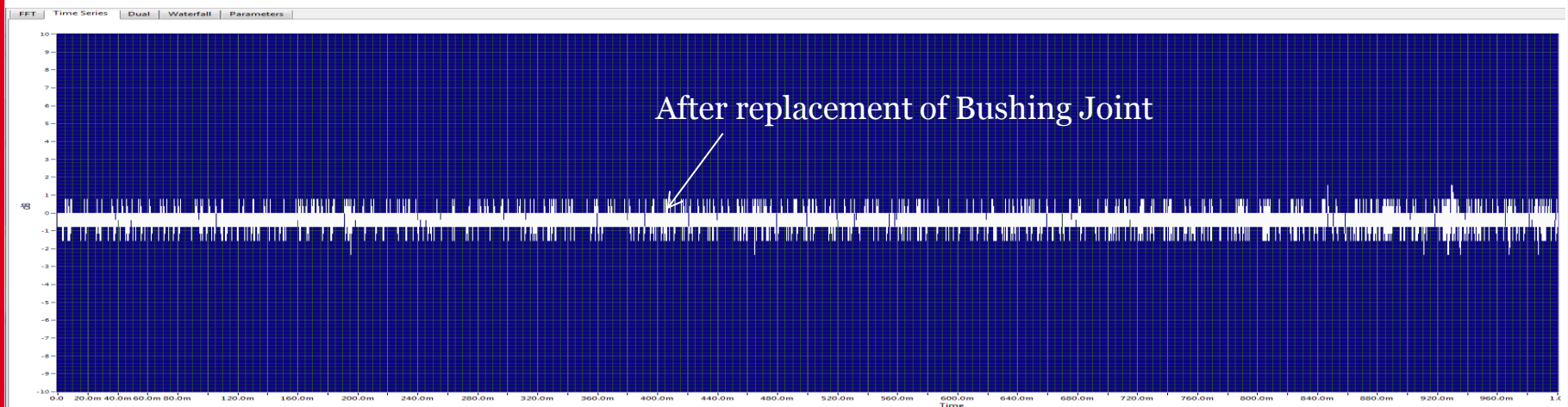
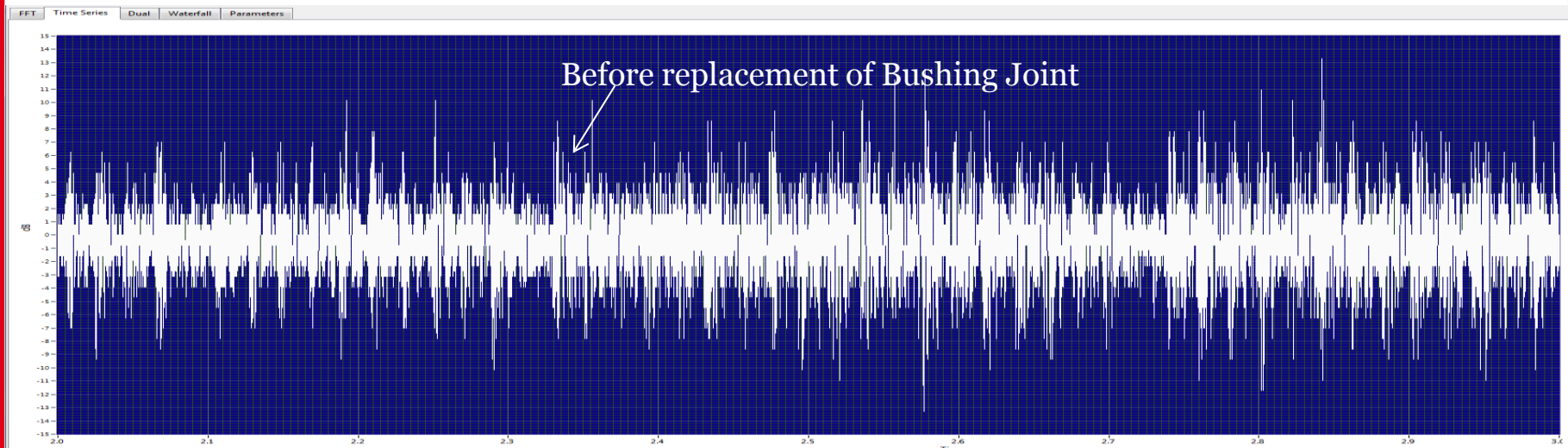
TR NO.11 PANEL (SIDE)

- Frequency Domain



TR NO.11 PANEL (SIDE)

- Time Domain



Visible Surface Discharge at Busbar of 22kV AIS due to High Humidity

