

Case History – 10 : Using Online Snapshot Ultrasonic Method

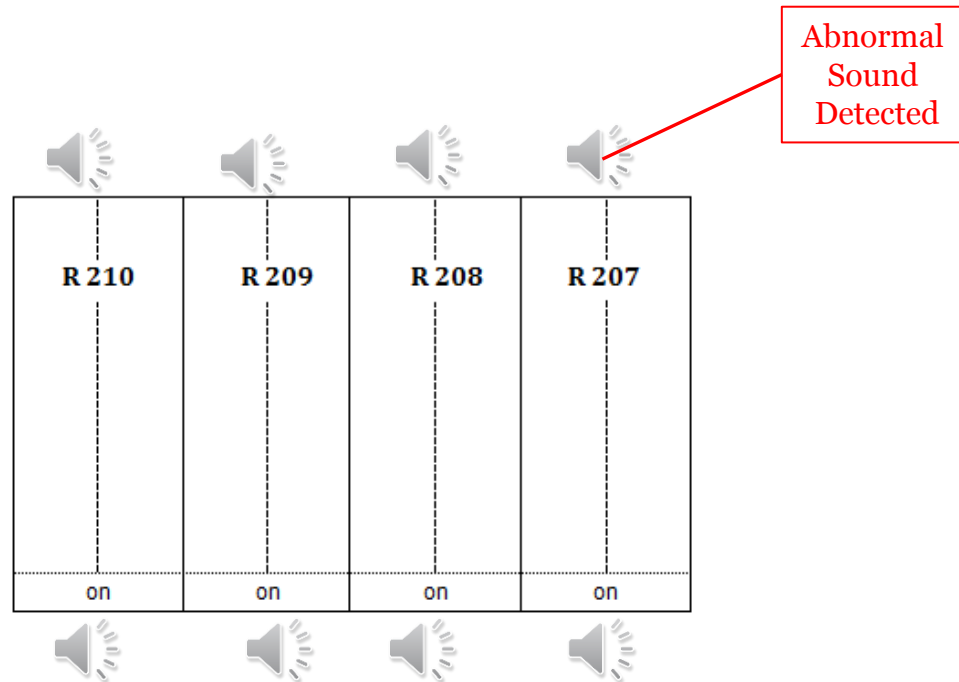
Equipment Under measurement : **6.6kV AIS Cutler-Hammer Switchgear**

Date of Measurement : **07th July 2014**

Type of Partial Discharge Measurement: **Snapshot Mode Ultrasonic Measurement**

Measurement Equipment : **Ultra TEV Locator (Airborne Ultrasonic sensor)**

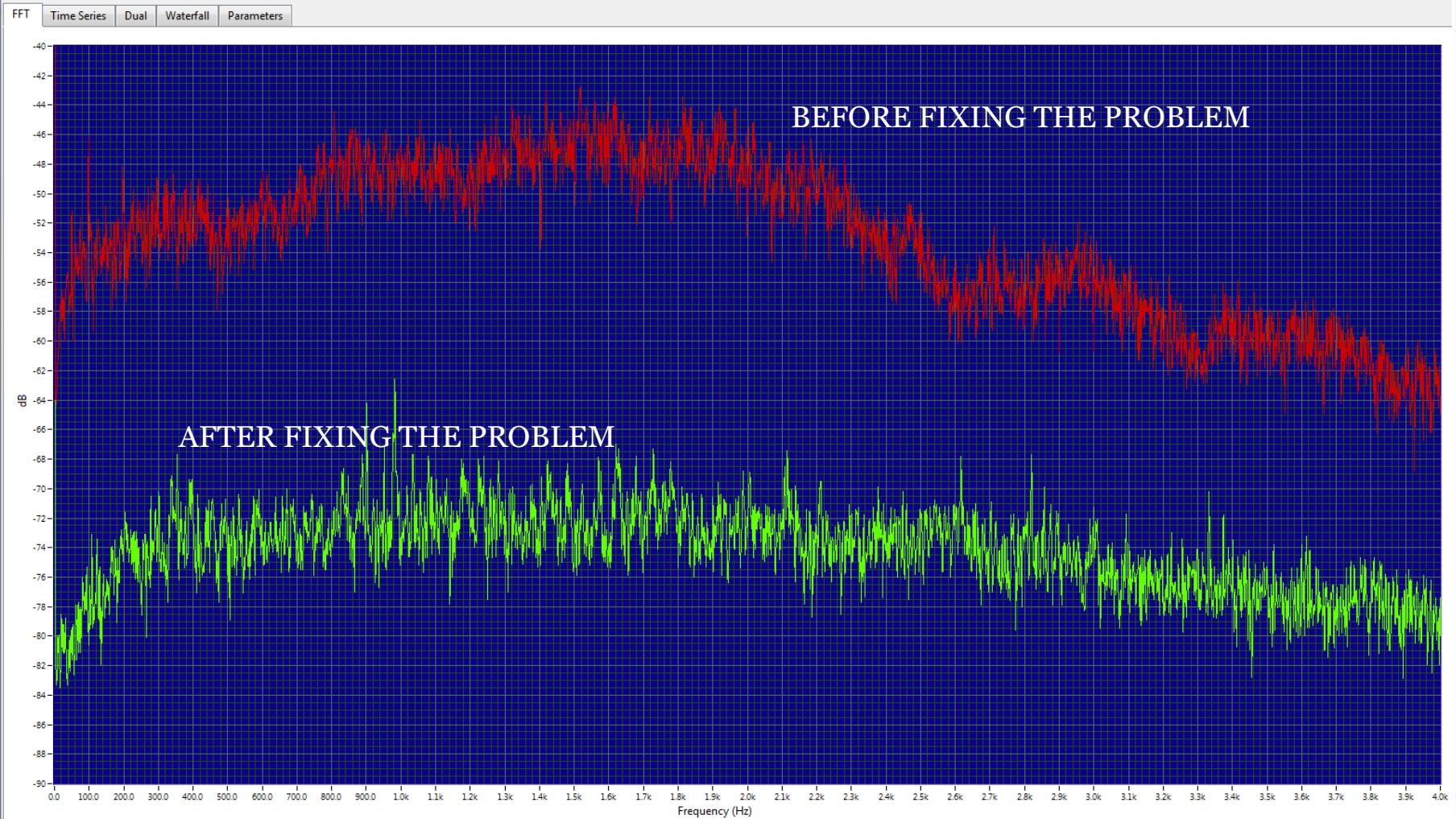
Observation: **Surface Partial Discharge at the cable at R207 chiller starter panel**



ABNORMAL ULTRASONIC DETECTION DUE TO SURFACE DISCHARGE

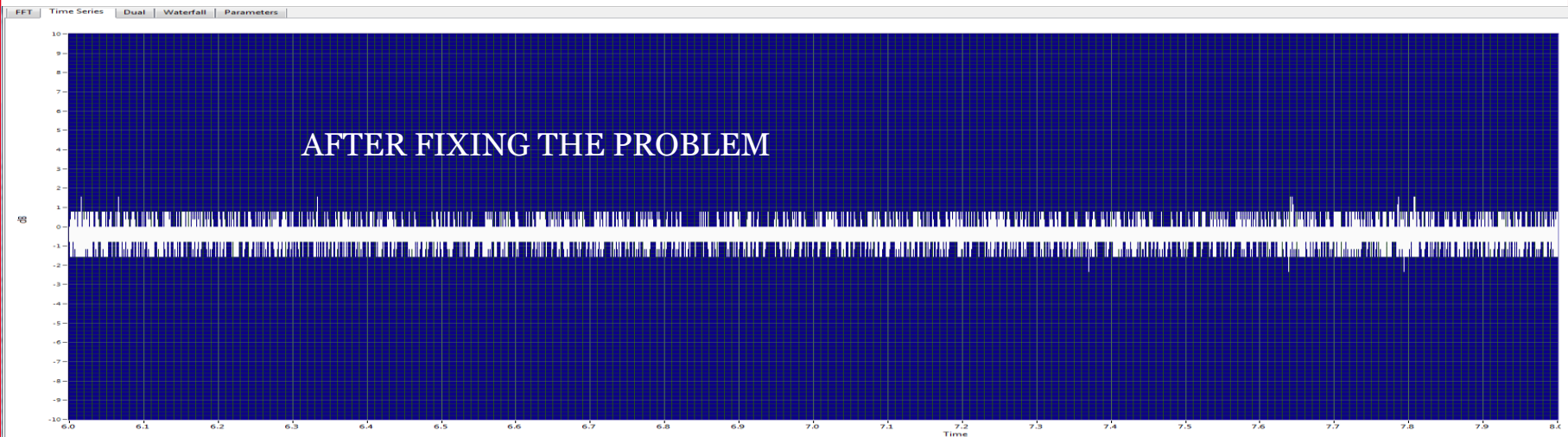
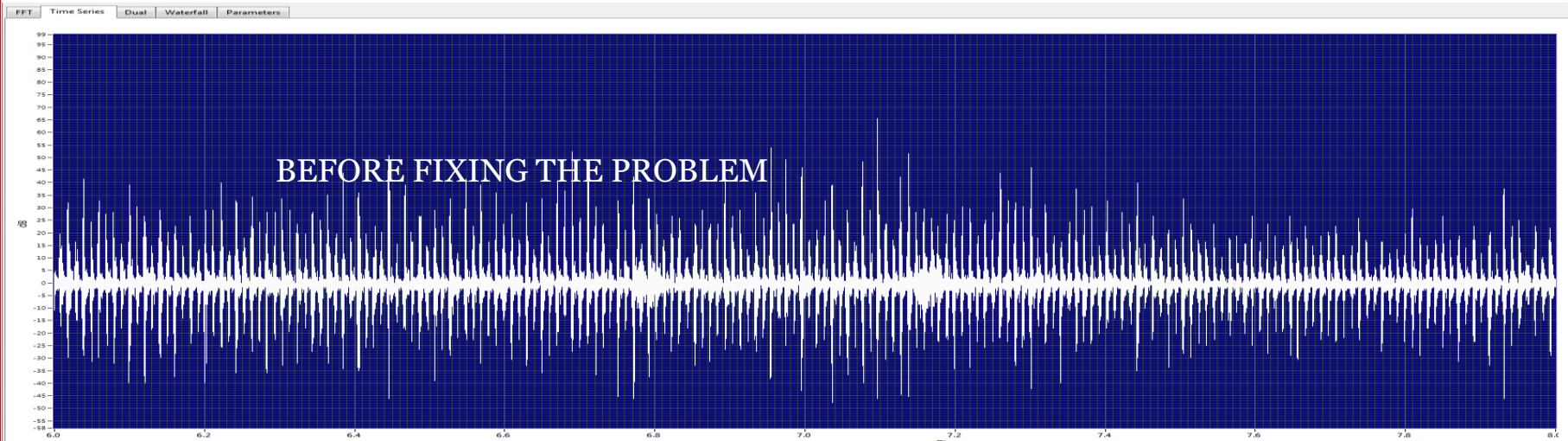
R207 CHILLER STATER PANEL (BACK SIDE)

- Frequency Domain



R207 CHILLER STATER PANEL (BACK SIDE)

- Time Domain



FRONT OF 6.6kV SWITCHGEAR



BACK OF 6.6kV SWITCHGEAR



Visible Surface Discharge at 6.6kV Cables

