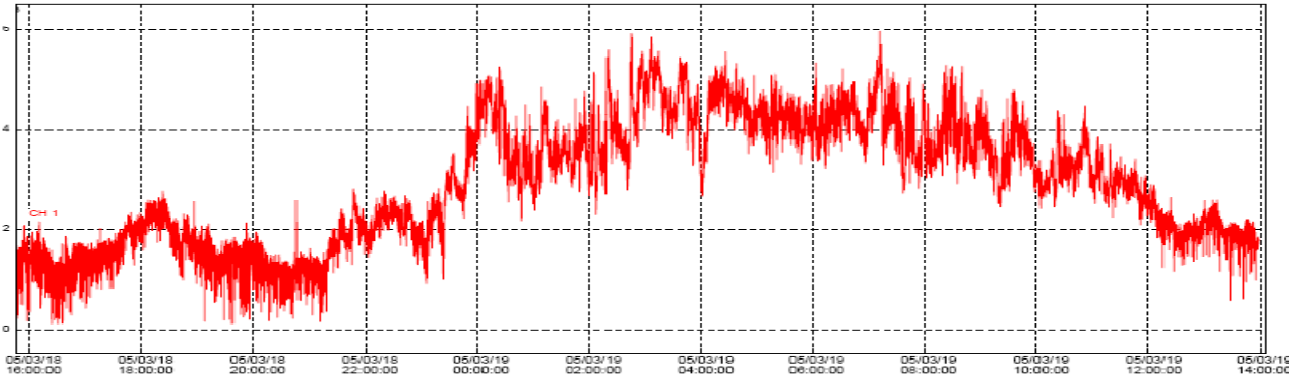


## Case history 4 using on-line continuous mode Ultrasonic method

Panel	Start Time	Stop Time	Average Voltage	Max Volt / Min Volt
22kV Panel	18 <sup>th</sup> March 2005 15:45pm	19 <sup>th</sup> March 2005 14:00pm	2.93V	5.96V / 0.12V



Partial Discharge Equipment used : **DS 386 from UE Systems of USA**  
Mode of measurement : On-line, Continuous mode, Airborne method

- 1) Date of measurement : 18<sup>th</sup> March 2005
- 2) Total hours measurement : On-line, 21hrs continuous mode
- 3) Date of failure : 6<sup>th</sup> July 2005
- 4) Type of equipment : 22kV AIS-GCB

### Analysis :

Average noise = 2.93volts

$\Delta V1 = V_{max} - V_{min} = 5.84\text{volts}$

$\Delta V2 = V_{max} - V_{average} = 3.03\text{volts}$

Both exceeds the 2.5volts guideline.

